



Excellent



The Objective

Your dog must find three rats, hidden in the brush. The rats are in a protective PVC tube and will not be harmed.

The Rules

- ⚡ When you enter the ring, you must remain in the designated area for 60 seconds.
- ⚡ You may not communicate with your dog in any way at any time.
- ⚡ When the judge tells you to, you may leave the designated area for the remaining time allowed (0 seconds to Q).
- ⚡ The judge decides when your dog has indicated they have found the rat.

A Qualifying Run (Q)

A qualifying run occurs when the judge has deemed that your dog has found the rats, within 60 seconds, and with no penalties.

Achieving a title

To achieve your excellent title (ExGChBH) in Brush Hunt, you must have obtained your Grand Champion title as well as successfully complete two qualifying runs at the excellent level.

Faults

You can be disqualified for:

- ★ leaving the designated area in the first 60 seconds;
- ★ touching your dog or the tube; or
- ★ speaking, pointing, clapping or communicating with your dog in any way.

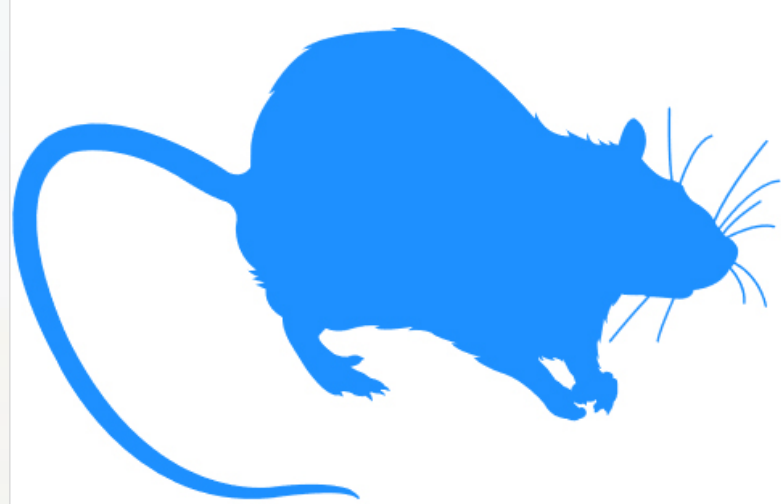
Elimination occurs when your dog does not indicate finding the rats within 120 seconds.



The Ring

The ring is 400 square feet. The ring will contain:

- ★ three hidden rats;
- ★ two tubes of litter; and
- ★ five piles composed of twenty bales of straw.



For complete rules go to
<http://www.ratscanadadogsports.com>

